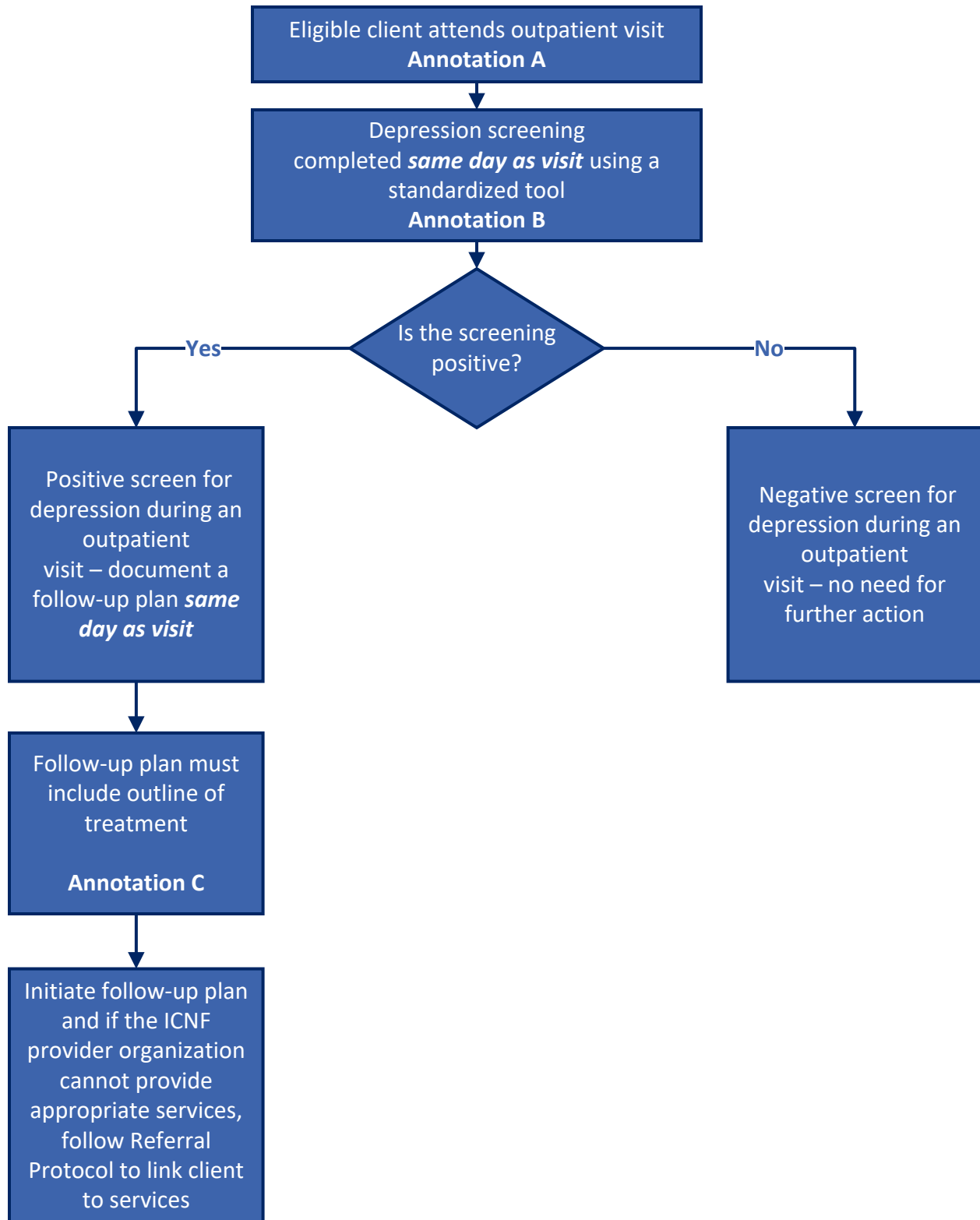


Child Welfare: Screening for Depression and Follow-up Plan: Ages 12–17 (CDF-CH)

The CDF-CH metric focuses on increasing the percentage of beneficiaries ages 12 to 17 screened for clinical depression on the date of the encounter using an age appropriate standardized depression screening tool, and if positive, a follow-up plan is documented *on the date of the positive screen*. This metric only applies to children in the Child Welfare Specialty Plan (applicable members will be identified in provider organization’s assignment list in HealthEC). See ICNF provider manual and HealthEC for metric specifications regarding ICNF metric set.



Annotations

Annotation A: Eligibility Exclusions

A beneficiary is not eligible if one or more of the following conditions are documented in the beneficiary medical record:

- Beneficiary has an active diagnosis of Depression or Bipolar Disorder
- Beneficiary refuses to participate
- Beneficiary is in an urgent or emergent situation where time is of the essence and to delay treatment would jeopardize the beneficiary's health status
- Situations where the beneficiary's functional capacity or motivation to improve may impact the accuracy of results of nationally recognized standardized depression assessment tools. For example: certain court-appointed cases or cases of delirium or active psychotic disorders (last example added by ICNF)

The following codes to identify exclusions must be used.

- G8433 Screening for clinical depression not documented, documentation stating the patient is not eligible
- G9717 Documentation stating the patient has an active diagnosis of depression or has a diagnosed bipolar disorder, therefore screening or follow up not required

Annotation B: Standardized Tools

An assessment tool that has been appropriately normalized and validated for the population in which it is being utilized. The name of the age appropriate standardized depression screening tool utilized must be documented in the medical record. Some depression screening tools are:

- PHQ-9 for Adolescents (PHQ-A) or PHQ-9 Modified for Teens (same tool with different naming conventions)
- Beck Depression Inventory-Primary Care Version (BDI-PC)
- Mood Feeling Questionnaire (MFQ)
- Center for Epidemiologic Studies Depression Scale (CES-D)
- Patient Health Questionnaire (PHQ-9)
- Pediatric, Symptom Checklist (PSC-17)
- PRIME MD-PHQ2
- Childhood Depression Inventory

Annotation C: Follow-up plan

Outline of treatment to be conducted as a result of depression screening. Follow up for a positive depression screening must include one (1) or more of the following:

- Additional evaluation for depression
- Suicide risk assessment
- Referral to a practitioner who is qualified to diagnose and treat depression
- Pharmacological interventions
- Other interventions or follow-up for the diagnosis or treatment of depression

The documented follow-up plan must be related to positive depression screening, for example: "Patient referred for psychiatric evaluation due to positive depression screening."