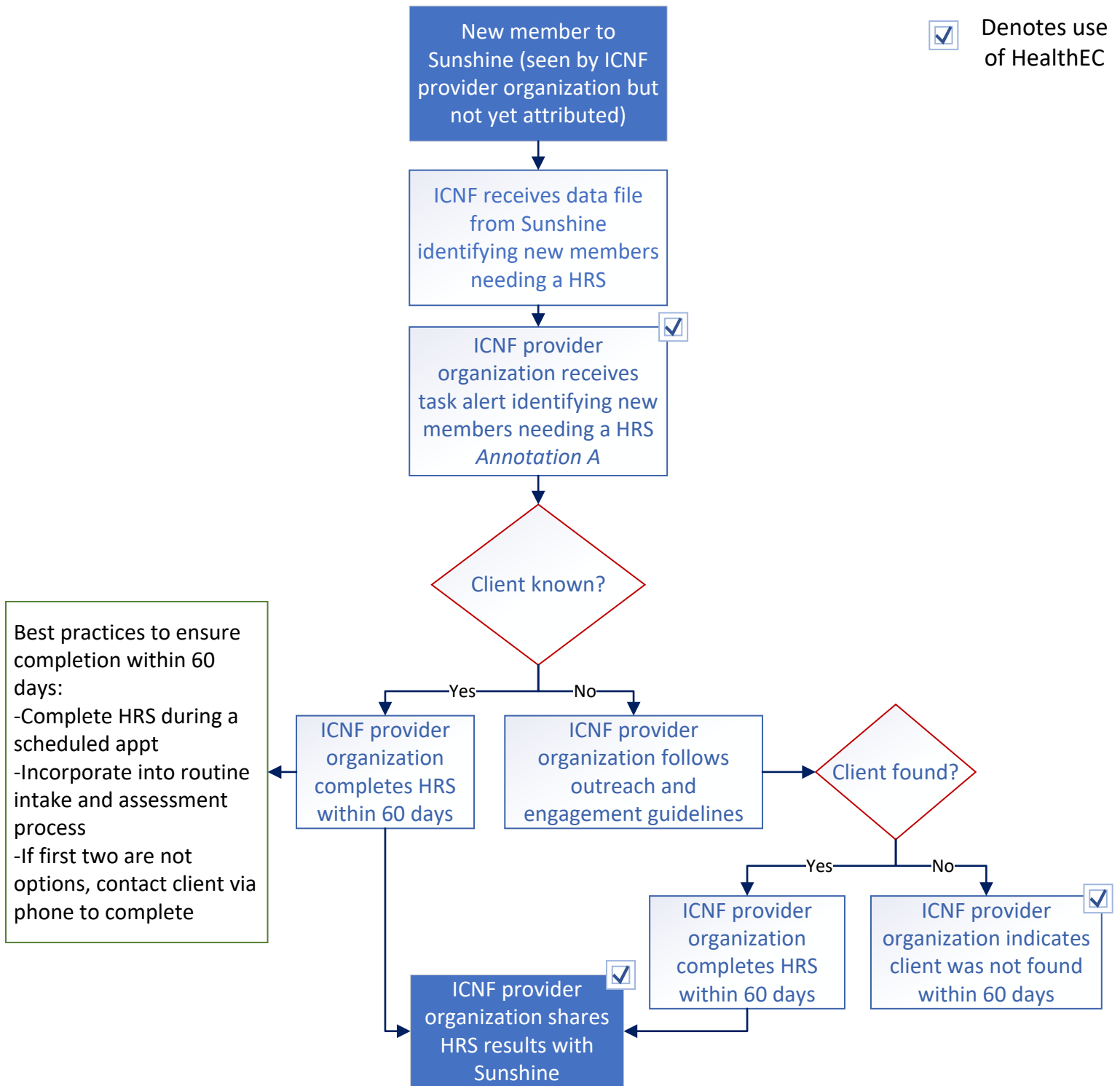


## ICNF Health Risk Screening (HRS) Completion Workflow

This workflow outlines the process for completion of a Health Risk Screening (HRS) for new Sunshine members who have seen an ICNF provider organization but are not yet attributed to ICNF. The metric specifies HRS is to be completed within 60 days of a Health Plan member becoming eligible, and HRS must be the version provided by Health Plan. See ICNF provider manual and HealthEC for metric specifications regarding ICNF metric set.



### Annotation A

An ICNF provider organization will receive members that have been seen by them at least once in the past X months.